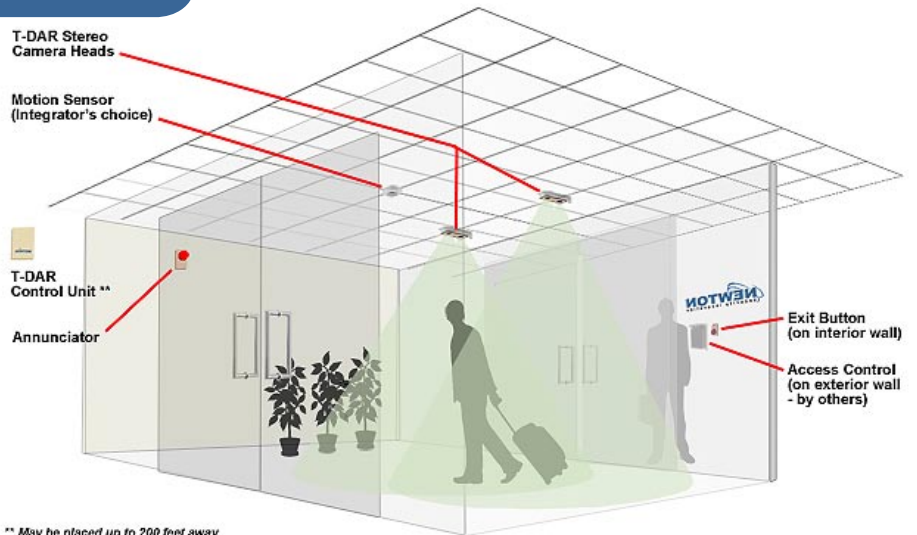


T-DAR Lobby Shield Medium Security Vestibule Mantrap System

Automated tailgating and piggybacking protection

Lobby Shield Benefits:

- **Adapts to existing building** and can be integrated into an existing vestibule, small lobby or interior room.
- **Simple to install** - no civil works such as the digging up of expensive flooring.
- **Seamless incorporation** into existing building security systems.
- **Low or no maintenance** - The system has no motors, gearboxes or moving parts to wear out or break
- **No special lighting required**; overhead office-level of 300 lux is sufficient and the system is unaffected by full ambient light from the outside.
- **Allows mixed traffic** - can be used as an entry and egress point for both pedestrian and carts without the need of special staging areas on the floor.
- **Allows free egress** from the building by multiple persons at the same time.
- **It is a stand-alone system** requiring no central monitoring, control or management.



Transform an Existing Entryway into a Security Zone

The Lobby Shield system is a package of modules that may be retro-fitted into a commonly configured building vestibule, converting that space into a medium security mantrap which allows the entry of only one authorized person at a time, while ignoring any cart, luggage or parcel in their possession.

The system is a combination of interconnected electronic door locks, ceiling-mounted stereo cameras, sophisticated software, a motion detector, an alarm annunciator, an Exit button and a control unit.

Lobby Shield is designed to work with the most customary vestibule door control configuration: a pre-existing, externally mounted entry control card reader or PIN unit adjacent to the locked outside single or double door. The adaptive Lobby Shield system requires no extensive floor, wall or ceiling alterations and is resistant to sunlight, glass, and mirrors.

The heart of the Lobby Shield system is the unique, patented T-DAR technology that is built into all Newton Security Inc. products that combines three-dimensional, stereo optical imaging and sophisticated Newton-developed software algorithms. This technology specifically and reliably admits only one person into a restricted area per valid authorization by tagging and tracking the person within the scanning zone, thus eliminating the security risks of piggybacking and tailgating.

The T-DAR Lobby Shield software accepts data from virtually any badge or access system, including biometric and smart I.D. systems, card readers, or PIN pads. T-DAR controls the electromechanical door locks so that when any one door is open, all other doors of the vestibule are automatically locked. ●●●



Primary elements of T-DAR Lobby Shield:

- Alarm annunciator - wall or ceiling mounted
- Control unit - wall mounted
- Stereo camera heads - ceiling mounted

Not shown:

- Motion sensor unit - integrator's choice
- Interior door electronic locks - integrator's choice
- Exit button - integrator's choice
- Exterior entry control unit - pre-existing, by owner

Two T-DAR Stereo
Camera Heads

Motion Sensor

Exit Button



ELEMENTS
NOT SHOWN:

Access Control
(on exterior wall and
by others)



Annunciator
(wall or ceiling
mounted)



Control Unit
(wall mounted in a
secure area that may
be up to 200 ft. away)

Company Background of Newton Security Inc.

Newton Security Inc. is a privately held firm delivering high technology solutions for the security issues of tailgating and piggybacking. Newton is the world's largest manufacturer and supplier of 3-D, stereo machine vision, single person detection systems.

The company was founded in 2002 to specifically develop a reliable solution to the tedious and often manpower-intensive problem of stopping tailgating and piggybacking into restricted areas. Today our systems are in use around the world at airports, government buildings, data centers, research laboratories, financial concerns, power plants, manufacturing sites, unmanned immigration and virtually every other category of secure areas. ●●●

The Lobby Shield system may be easily retro-fitted into a commonly configured building vestibule.

How Lobby Shield Works - The Sequence of Operation

Example of a normal passage:

- The outer vestibule door is normally always locked.
- The inner lobby door is normally always unlocked.
- When a person accesses the exterior control system reader and is approved, the outer door unlocks and the inner lobby door locks.
- The system scans the vestibule to detect if only one person is present.
- If there is only one person, the outside door is locked, followed at once by the unlocking of the inner door.
- When the person moves into the lobby, the inner door closes and remains unlocked.
- The Lobby Shield is now ready for the next passage.

If there is a violation with more than one person present:

- If the entry scan detects more than one person in the vestibule, the outer door remains unlocked and the inside lobby door remains locked.
- A red warning light flashes and an audible alarm is accompanied by a

recorded message instructing all to exit to the outside and for only one person to initiate the entry process again.

- The system resets itself after 10 seconds, once it has determined that the vestibule is empty.

One or more persons may exit the building at once through the Lobby Shield:

- They open the unlocked inner door and enter the vestibule.
- The inner door closes behind them and it remains unlocked.
- An "Exit" button, located in the vestibule adjacent to the outer door, is pushed.
- This locks the inner door and unlocks the outer door to exit the mantrap.
- If another person, who has received authorization from access control, enters the vestibule from the outside while someone is exiting, they will be allowed to continue as a normal entry.
- But if that person has not been authorized, an alarm will sound, the inner door remains locked and they will need to exit to the outside. ●●●



Offices and manufacturing facilities of Newton Security are located minutes south of Seattle, WA



Version 012814